



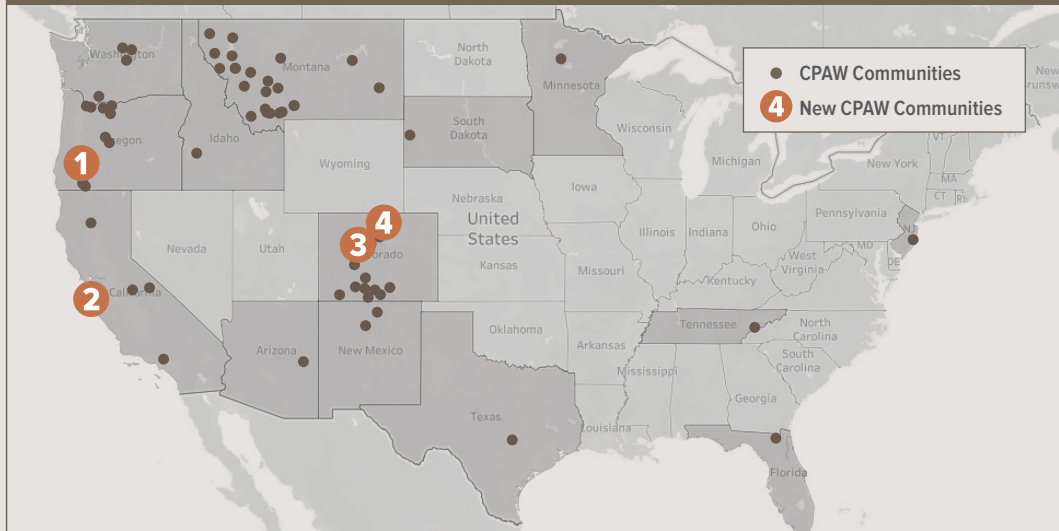
**CPAW Impact: 2021**  
[cpaw.headwaterseconomics.org](http://cpaw.headwaterseconomics.org)



# Community Partnerships

Community Planning Assistance for Wildfire (CPAW) builds on the National Cohesive Wildland Fire Management Strategy to create fire-adapted communities through improved land use planning. A program of Headwaters Economics, CPAW provides land use planning recommendations, communication tools, hazard assessments, capacity-building, and custom research through partnerships with cities, counties, and fire districts. We've worked with more than 80 communities and our work is featured in peer-reviewed literature and the national media.

## CPAW COMMUNITIES



## NEW CPAW COMMUNITIES IN 2021

- |  |   |  |  |
|--|---|--|--|
| <p><b>1</b><br/><b>DOUGLAS COUNTY, OR:</b><br/>Collaboration with FEMA, University of Oregon, and county government on resilience and recovery strategies.</p> | <p><b>2</b><br/><b>SAN MATEO COUNTY, CA:</b><br/>Inventory and recommendations for WUI practices in compliance with state code and creation of mitigation resources for stakeholders.</p> | <p><b>3</b><br/><b>ESTES PARK, CO:</b><br/>Land use planning recommendations and communication strategies for engaging diverse stakeholders.</p> | <p><b>4</b><br/><b>GRAND COUNTY, CO:</b><br/>Collaboration with WiRe, CMAT, and CFRI to help the county develop an integrated approach to wildfire mitigation.</p> |
|--|---|--|--|

## CPAW Outcomes in 2021



### PARK COUNTY, MONTANA

In Fall 2021, CPAW will convene partners from Park

County's construction, insurance, and real estate industries for a deep dive on wildfire-resistant building practices. The outcome will be an action plan for engaging additional partners and implementing new land use tools.



### MISSOULA COUNTY, MONTANA

Missoula County is implementing CPAW's recommendations for new zoning and WUI codes. CPAW continues to provide technical support and is helping coordinate a local funding measure for mitigation tools.



### AUSTIN, TEXAS

Based on CPAW recommendations, Austin adopted a WUI code in January 2021, becoming the largest city outside the state of California to do so. CPAW's technical support and custom research have been instrumental in advancing Austin's efforts to become better fire-adapted.



[cpaw.headwaterseconomics.org](http://cpaw.headwaterseconomics.org)

## Research & Data Tools



### WILDFIRE RISK REPORT

This report—available through the free, online Economic Profile System—provides detailed wildfire risk and socioeconomic data for every county in the nation. The reports provide community leaders with data about where people may be most vulnerable to wildfire.



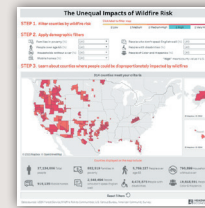
### LIVING WITH WILDFIRE VIDEO

Interviews with renowned wildfire experts Stephen Pyne, Professor Emeritus, and Jack Cohen, Ph.D., are featured in this inspiring video about how communities can learn to live alongside wildfire when we build communities with wildfire in mind.



### STRUCTURES DESTROYED BY WILDFIRE DATA TOOL

By aggregating previously difficult to access federal wildfire incident reports, this easy-to-use data visualization reveals information about the most destructive wildfires over the last 15 years and is searchable by state.



### THE UNEQUAL IMPACTS OF WILDFIRE

A new tool and research analysis demonstrate where high wildfire risk intersects social and economic factors that can make it difficult for people to prepare for, respond to, and recover from a wildfire. This research can help leaders identify where community investments will help the most vulnerable people.



## 2021 by the Numbers



**1,200 participants**  
in CPAW presentations  
and webinars



**85 media stories**  
in the Associated Press, NPR, E&E,  
the New York Times, and others



**24,000 users**  
of the CPAW website



**2,000 downloads**  
of our wildfire risk report



[cpaw.headwaterseconomics.org](http://cpaw.headwaterseconomics.org)

# Looking Forward

In 2022, CPAW will engage with new local partners, organizations, federal agencies, and institutions to strengthen and create fire-adapted communities. Planned projects include innovative research tools, data visualizations, and strategic recommendations for reducing wildfire risks to people and homes.



## RESEARCH & POLICY

- A study on the costs of building a wildfire-resistant home in California.
- An economic evaluation of the magnitude of retrofitting homes across the West.



## COMMUNICATION & DATA VISUALIZATIONS

- An interactive library of wildfire-related land use codes and best practices.
- Customized community outreach materials for homeowner mitigation.



## COMMUNITY PROJECTS

- Community recommendations for adopting and implementing land use planning regulations.
- New and continued partnerships with communities.



CPAW is a program of Headwaters Economics. It is funded by grants from the U.S. Forest Service and private foundations and is an equal opportunity employer.

Patricia Hernandez | Executive Director | [patty@headwaterseconomics.org](mailto:patty@headwaterseconomics.org) | 406.599.7425  
Kimiko Barrett, Ph.D. | Lead Wildfire Researcher | [kimi@headwaterseconomics.org](mailto:kimi@headwaterseconomics.org) | 406.224.1837



[cpaw.headwaterseconomics.org](http://cpaw.headwaterseconomics.org)