



Providing communities with
land use planning solutions
to reduce wildfire risk.

2020 Program Report

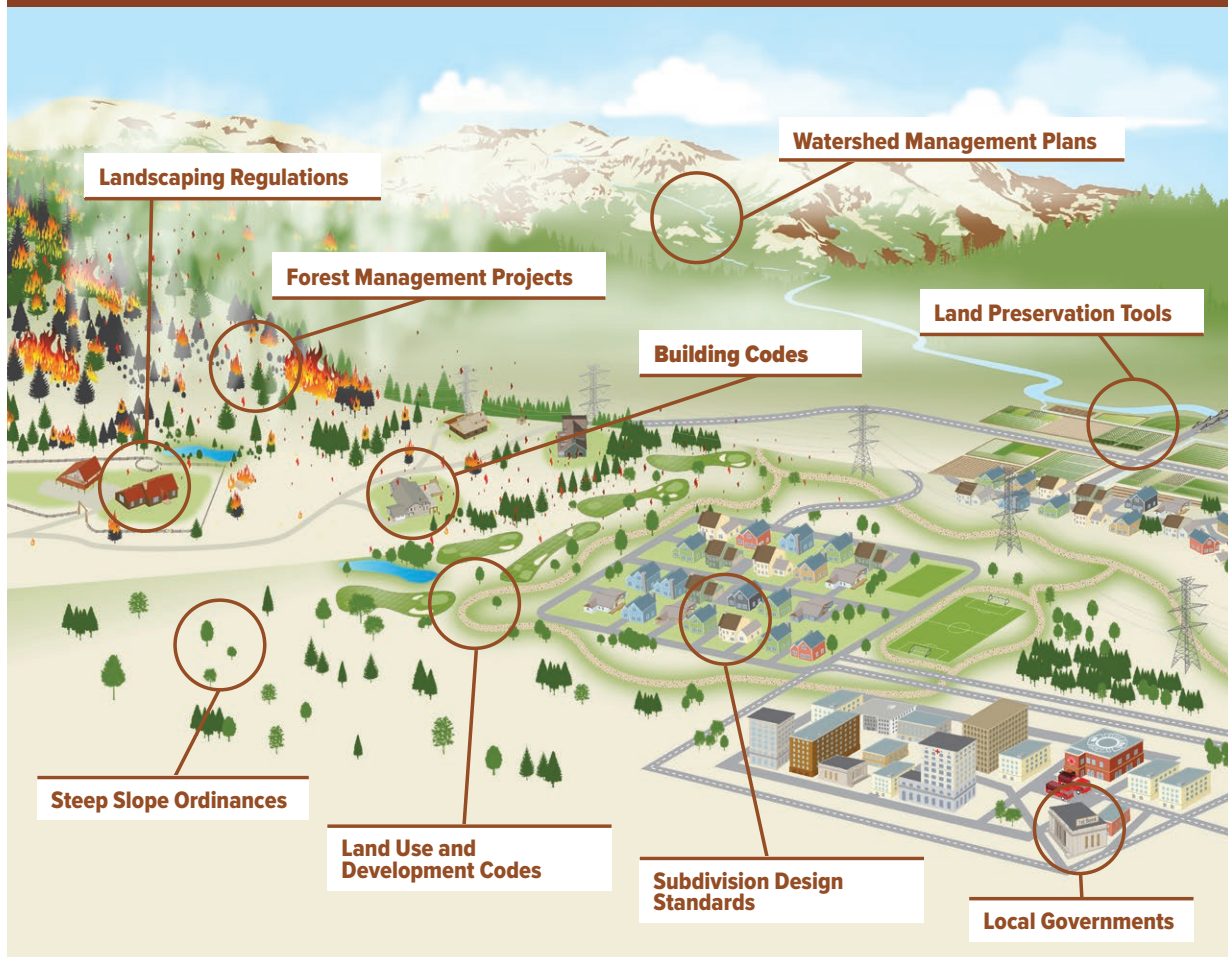




CPAW builds on the National Cohesive Wildland Fire Management Strategy to create fire-adapted communities.

COVID-19 RESPONSE: We have significantly expanded our online resources and virtual platforms including videos featuring subject matter experts, interactive visualizations and maps, graphics, and webinars so we continue to broadly disseminate information about community wildfire risk and mitigation strategies.

LAND USE PLANNING REDUCES WILDFIRE RISKS



CPAW IMPACT SINCE 2015

70 communities
across 14 states

700 people attended
training events

60 workshops, conferences,
and webinars

40,000 users of online resources,
reports, and tools

900 newsletter
subscribers

175 stories in a
variety of media



TYPES OF SERVICES & EXAMPLES

LAND USE PLANNING

Recommendations for plans, codes, and ordinances

Taos County, New Mexico:

CPAW provided:

- Recommendations to strengthen land use regulations and building standards in high hazard areas.
- Outreach materials produced in Spanish and English.

Taos outcomes:

- Land use regulations updated to require adequate access, water supply, defensible space, and ignition-resistant building materials in high hazard areas.



HAZARD ASSESSMENTS

Neighborhood- and community-scale maps

Chelan County, Washington:

CPAW provided:

- Hazard maps in partnership with USDA Forest Service Rocky Mountain Research Station.
- Land use planning recommendations to reduce wildfire risk.

Chelan County outcomes:

- Adopted hazard maps in Community Wildfire Protection Plan.
- Hired a fire marshal to ensure compliance.



CAPACITY BUILDING

Workshops and trainings

Park County, Montana:

CPAW provided:

- Three research reports to understand the costs, impacts, and opportunities to reduce wildfire risk in the county.

Park County outcomes:

- 125 builders, architects, and leaders attend summit to learn about building to wildfire-resistant standards.
- Planning follow-up workshop to continue supporting ignition-resistant building measures.



RESEARCH & SCIENCE

Custom research, data, and tools

Austin, Texas:

CPAW provided:

- Recommendations to strengthen subdivision and building standards in high hazard areas.
- Online tool to identify vulnerable populations most at-risk to wildfires.

Austin outcomes:

- Adopted a WUI code requiring ignition-resistant building materials
- Mitigation resources directed to vulnerable neighborhoods.



A YEAR IN REVIEW



August 2019

Drafted land use planning recommendations for 2019 CPAW communities.

October 2019

Presented at the National Cohesive Strategy Workshop in Plymouth, MA.



December 2019

Hosted annual *Land Use Planning & Wildfire Forum* in Boulder, CO, convening past, current, and future CPAW community members with academics, USFS leadership, and research partners.

February 2020

Conducted first site visits to new CPAW communities.



April 2020

Hosted webinars to extended CPAW network, including 600 attendees, to share the new USFS Wildfire Risk to Communities website.

June 2020

Testified to the House Committee on Natural Resources subcommittee regarding the intersection of wildfire risks, vulnerable populations, and COVID-19 impacts.

July 2019

Visited and trained 2019 CPAW communities; published wildfire policy paper in the *Idaho Law Review Journal*.

September 2019

Hosted the *Building for Wildfire Summit* in Big Sky, MT; presented wildfire-resistant-homebuilding research at the American Institute of Architects Conference in Bozeman, MT.

November 2019

Selected six new CPAW communities for 2020; visited and delivered final recommendations to 2019 communities.

January 2020

Conducted kickoff calls with new 2020 CPAW communities, scoped projects, and signed MOUs.

March 2020

Presented at workshops hosted by the National Fire Protection Association in San Francisco, CA, and the Montana Fire-Adapted Communities Network in Helena, MT.

May 2020

Hosted site visits, capacity training, and hazard assessment workshops for CPAW communities.

July 2020

Launched the *Communities Threatened by Wildfire* interactive map showing communities where wildfires encroached within two miles of town.



2020 WORK PLAN

As the wildfire threat increases and the COVID-19 pandemic drains community resources, thousands of communities need CPAW support and services. The CPAW Team will continue to be adaptable, sensitive, and effective in providing communities with a variety of services to meet their mitigation and planning needs including:



LAND USE PLANNING

- Provide recommendations to six communities, including Baker County (FL), Los Angeles (CA), La Plata County (CO), Medford (OR), Missoula (MT), and Nederland (CO)
- Measure, monitor, and provide ongoing support to previously enrolled communities



HAZARD ASSESSMENTS

- Host virtual hazard assessment workshop with local partners to calibrate wildfire hazard model in La Plata County (CO)
- Produce hazard maps and tools for La Plata County (CO) to incorporate into land use planning and mitigation activities



CAPACITY TRAINING

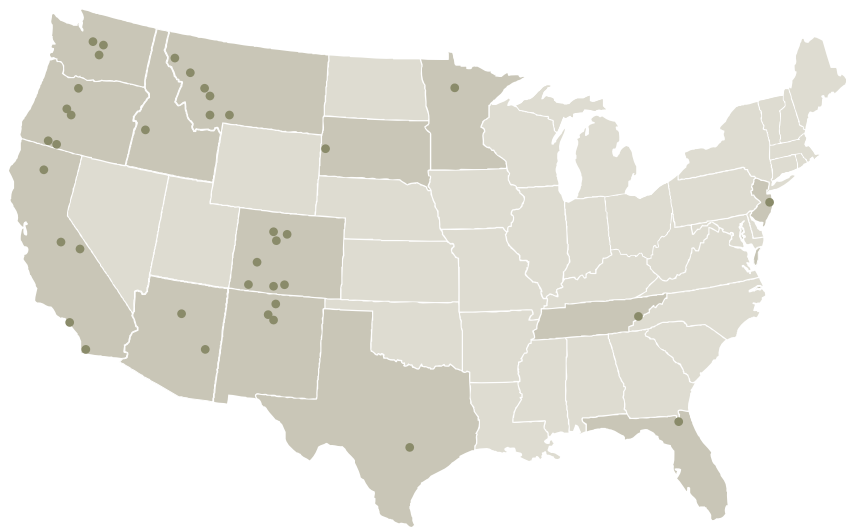
- Produce a series of short online videos on land use planning and wildfire topics
- Host 3 community-level virtual capacity trainings
- Participate in virtual conferences, webinars, and presentations
- Expand and update the CPAW website



RESEARCH & SCIENCE

- Develop an online tool that rapidly generates wildfire risk reports at the community, county, and state level
- Research successful examples, opportunities, and barriers to land use planning to reduce wildfire risks

CPAW COMMUNITIES





CPAW is a program of Headwaters Economics.

CPAW is funded by grants from the U.S. Forest Service and private foundations, and is an equal opportunity employer.

Ray Rasker, Ph.D. | Executive Director | ray@headwaterseconomics.org | 406-570-7044

Kimiko Barrett, Ph.D. | Research & Policy Analyst | kimi@headwaterseconomics.org | 406.224.1837

Helping communities better plan the wildland-urban interface | www.cpaw.headwaterseconomics.org