



COMMUNITY PLANNING ASSISTANCE FOR WILDFIRE

Together we can reduce wildfire risk in your community.

WHAT WE DO

Community Planning Assistance for Wildfire (CPAW) works with communities to reduce wildfire risks through improved land use planning. CPAW is a program providing communities with professional assistance from planners, foresters, economists and wildfire risk modelers to integrate wildfire mitigation into the development planning process. CPAW communities receive customized services, including:

LAND USE PLANNING

We provide communities with expertise in land use planning, forestry, and hazard mitigation to reduce wildfire risk.

HAZARD ASSESSMENTS

We help communities develop wildfire hazard assessments to identify and prioritize areas of concern.

CAPACITY BUILDING

We offer workshops, trainings, and webinars to facilitate learning, networking, and skills development.

RESEARCH & SCIENCE

We help grow the larger body of knowledge supporting land use planning and wildfire mitigation in the wildland-urban interface

All services provided through CPAW come at no cost to the community. Implementation of recommendations is voluntary and under the authority of the local jurisdiction.

WHERE WE WORK

We work with communities at all scales and sizes across the United States. Communities apply through a competitive process to participate in CPAW. Since our founding in 2015, we have worked with 30 communities in 13 states.



ARIZONA

Flagstaff
Pinetop-Lakeside

CALIFORNIA

Mammoth Lakes
Mariposa County
Redding
San Diego

COLORADO

Boulder County
Gunnison County
Huerfano County
San Luis Valley
Summit County

IDAHO

Boise

MINNESOTA

Bemidji

MONTANA

Lewis & Clark
County
Missoula County
Park County

NEW MEXICO

Los Alamos
Santa Fe
Taos County

OREGON

Ashland
Bend
Sisters
Wasco County

SOUTH DAKOTA

Deadwood

TENNESSEE

Pigeon Forge

TEXAS

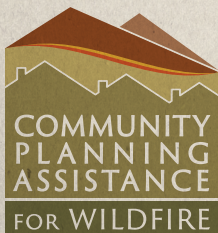
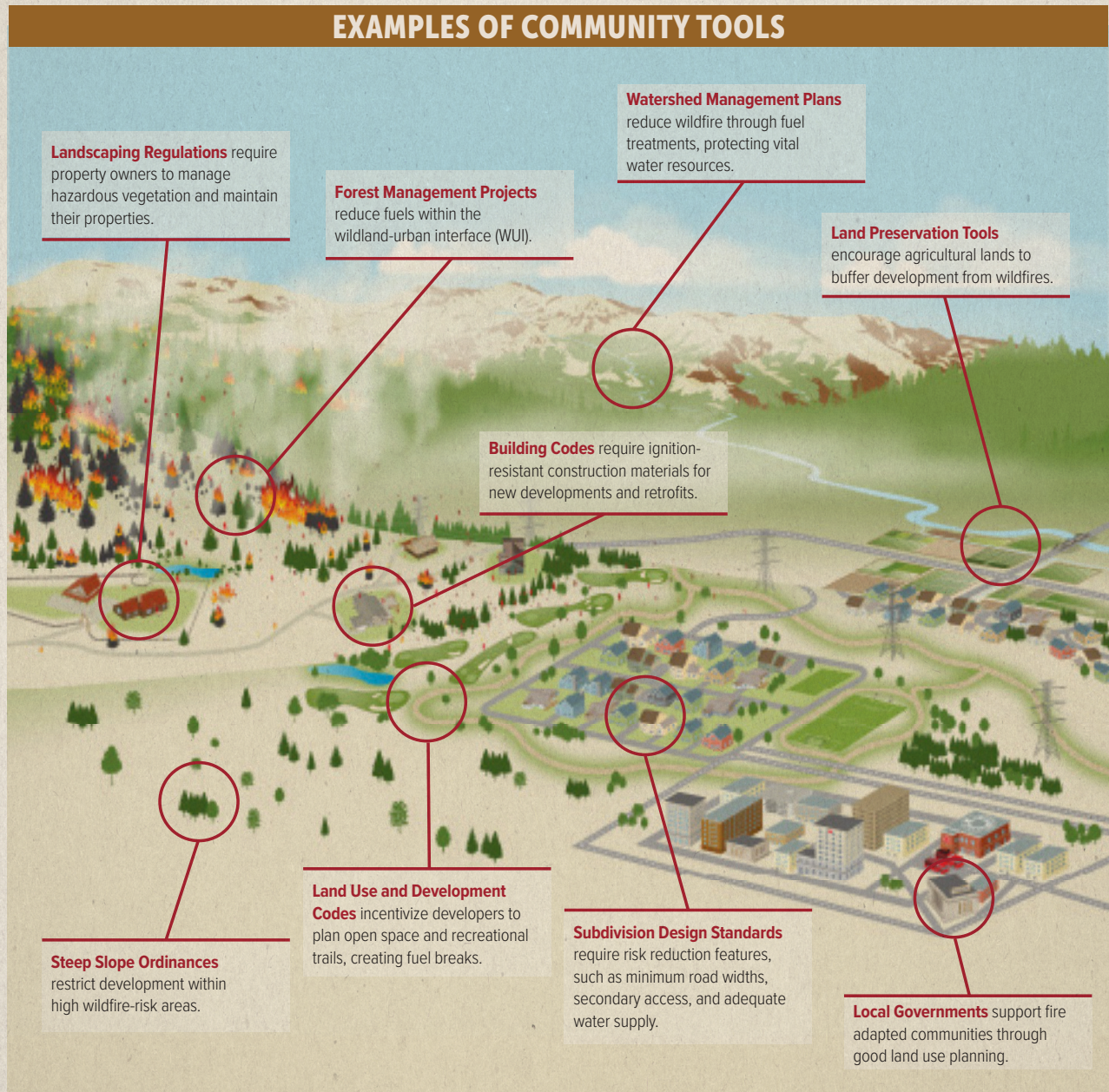
Austin

WASHINGTON

City of Chelan
Chelan County
Wenatchee

TOOLS

Land use planning tools to reduce wildfire risk are diverse and can help communities determine where to allow development, what types of building materials will help keep people safe, and what infrastructure is needed to safely respond when disasters strike. CPAW develops recommendations after multiple on-site assessments, ongoing stakeholder engagement, and extensive review of community documents.



CPAW is a partnership between [Headwaters Economics](#), [Wildfire Planning International](#), and the [U.S. Forest Service Rocky Mountain Research Station](#). It is funded by grants from the [U.S. Forest Service](#) and private foundations. CPAW is an equal opportunity employer.

Helping communities better plan the wildland-urban interface | www.planningforwildfire.org