



COMMUNITY PLANNING ASSISTANCE FOR WILDFIRE

Land use planning to reduce wildfire risk in your community



2018 PROGRAM REPORT

planningforwildfire.org



Working with communities across the country, Community Planning Assistance for Wildfire (CPAW) provides local governments with land use planning solutions to better manage their wildland-urban interface (WUI).

VISION

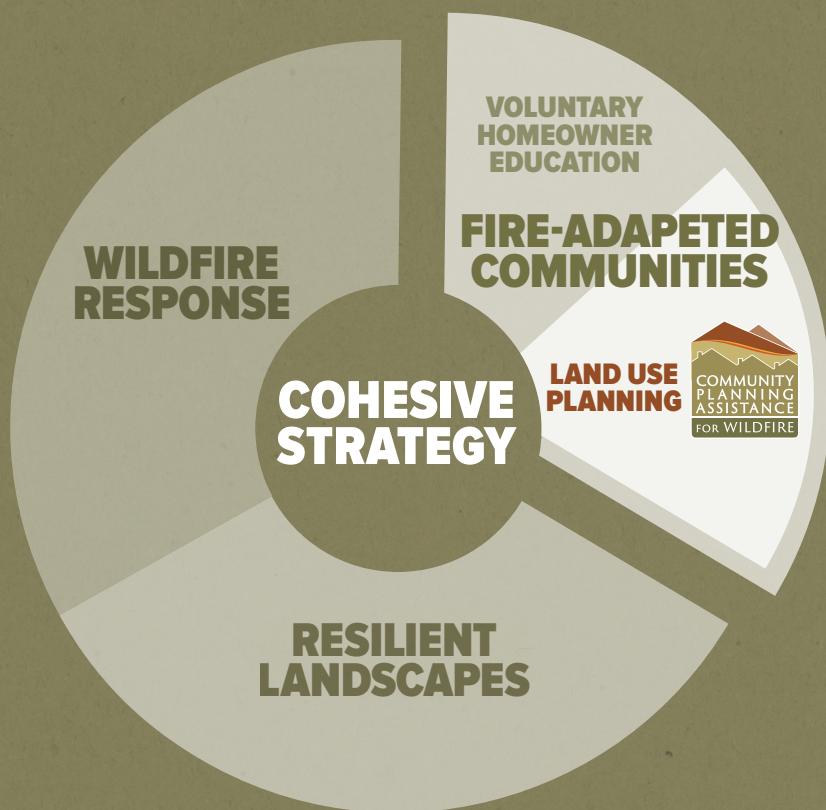
CPAW builds on the National Cohesive Wildland Fire Management Strategy to create fire-adapted communities. By integrating land use planning approaches with the best available science on wildfire risk, fire ecology, and demographic trends, CPAW helps communities live with wildfire where danger to firefighters and the public is minimized, risk to homes and infrastructure is reduced, and wildfire is able to play its ecological role.

HOW CPAW WORKS

- Communities apply to the CPAW program.
- Accepted communities sign a MOU identifying collaborative roles.
- A variety of services, including land use planning recommendations, risk mapping, trainings, and research tools are provided at no cost to the community.
- All recommendations and services are voluntary and adopted at the discretion of the local jurisdiction.
- Follow-up support is available to help implement land use planning recommendations and services.

LAND USE PLANNING & THE COHESIVE STRATEGY

The Cohesive Strategy is guided by three primary principals, including creating fire-adapted communities through improved land use planning.



Summit County, Colorado passed new wildfire regulations in its Land Use Development Code based on CPAW recommendations. The new regulations include measures to assess wildfire hazards as a part of any rezoning request, prepare defensible space plans with rezoning and subdivision requests, improve access requirements to accommodate emergency vehicles, require non-combustible fencing within 10 feet of structures, and prohibit uncovered firewood storage within 30 feet of structures during the designated wildfire season.

26

Communities participating in CPAW in **13 STATES**

7

Communities provided with wildfire risk assessments to inform land use planning and review of proposed new developments

600

Planners, fire personnel, elected officials, and other stakeholders have participated in local workshops and peer-to-peer learning opportunities

TYPES OF SERVICES OFFERED

LAND USE PLANNING

We provide communities with land use planning recommendations to mitigate wildfire risk through land use codes, regulations, and ordinances.

RISK ASSESSMENTS

We use the best available science to model and map wildfire risk at the neighborhood scale.

TRAINING

We host workshops and trainings to facilitate learning, networking, and best practices for reducing wildfire risk through improved land use planning.

RESEARCH & SCIENCE

We provide customized research and tools to enhance understanding of wildfire risks and trends.

EXAMPLES

- **Chelan County (WA)** – CPAW facilitated the proposed adoption of a wildland-urban interface (WUI) Code to regulate development in wildfire-prone lands.
- **City of Deadwood (SD)** – CPAW recommendations were incorporated into the city's updated Comprehensive Plan.

- **Lewis & Clark County (MT)** – County planners are using the wildfire risk assessment developed by the Rocky Mountain Research Station to inform regulations and guide the review of proposed developments in high-risk areas.
- **City of Bemidji (MN)** – Identification of areas of high wildfire hazard are being incorporated into the city's Comprehensive Plan.

- **Land Use Planning & Wildfire Forum** – This annual event brings together land use planners, fire personnel, mitigation specialists, elected officials, and federal agencies to share lessons learned and opportunities for wildfire mitigation in the WUI.
- **Capacity Building Workshops** – A 1-day training is offered in each CPAW community to educate local stakeholders on land use planning measures that reduce wildfire risk.

- **Online Interactive Tools** – A GIS-based online platform telling the community's story of living with wildfire and mitigation measures has been developed for multiple CPAW communities.
- **Identifying Populations at Risk to Wildfires** – The cities of Santa Fe and Austin received online tools allowing local governments and fire districts to identify where wildfire may impact vulnerable populations.

CPAW COMMUNITIES

We work with and learn from communities at all scales and sizes across the United States. Communities apply through a competitive process to participate in CPAW. Since our founding in 2015, we have worked with 26 communities in 13 states.

ARIZONA

Flagstaff

CALIFORNIA

Mammoth Lakes
San Diego

COLORADO

Boulder County
Huerfano County
San Luis Valley
Summit County

IDAHO

Boise

MINNESOTA

Bemidji

MONTANA

Lewis & Clark County
Missoula County
Park County

NEW JERSEY

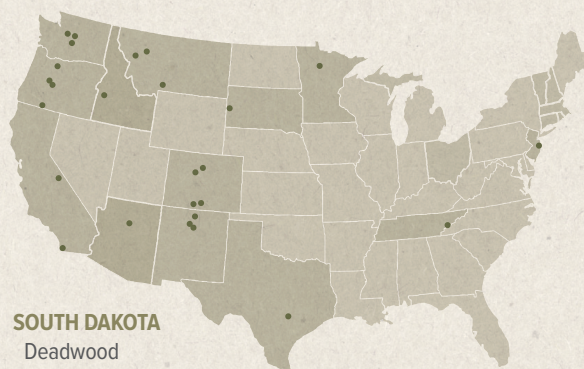
Township of Ocean

NEW MEXICO

Los Alamos
Santa Fe
Taos County

OREGON

Ashland
Bend
Sisters
Wasco County



SOUTH DAKOTA

Deadwood

TENNESSEE

Pigeon Forge

TEXAS

Austin

WASHINGTON

City of Chelan
Chelan County
Wenatchee



City of Chelan, Washington

adopted a wildland-urban interface (WUI) Code based on CPAW recommendations. The WUI Code includes building, access, water supply, and landscaping requirements to make Chelan's fire-prone neighborhoods more resilient to wildfire.

15

Trainings to increase capacity and understanding of using land use planning tools to reduce wildfire risk

13

Presentations at professional conferences

45

National and local press stories

CPAW TIMELINE

	PRE-CPAW	2016	2017	2018
COMMUNITIES	<ul style="list-style-type: none"> Summit County, CO Profiled five cities (Austin, TX; Boulder, CO; Flagstaff, AZ; San Diego, CA; Santa Fe, NM) 	<ul style="list-style-type: none"> Austin, TX Bend, OR Missoula, MT Taos, NM Wenatchee, WA 	<ul style="list-style-type: none"> Ashland, OR Bemidji, MN Boise, ID City of Chelan, WA Chelan County, WA Huerfano County, CO Lewis & Clark County, MT Park County, MT 	<ul style="list-style-type: none"> Deadwood, SD Los Alamos, NM Mammoth Lakes, CA Pigeon Forge, TN San Luis Valley, CO Sisters, OR Township of Ocean, NJ Wasco County, OR
MILESTONES	<ul style="list-style-type: none"> Pilot project completed in Summit County, CO Report released: <i>Best Practices for Land Use Planning to Reduce Wildfire Risk: Lessons from Five Western Cities</i> CPAW Program launched 	<ul style="list-style-type: none"> Five communities accepted into CPAW Hosted inaugural Land Use Planning & Wildfire Forum bringing together land use planners, fire personnel, and federal leadership Wildfire hazard mapping developed in partnership with Rocky Mountain Research Station Presented at 10 conferences and events Report released: <i>Does Insurance Affect Home Development on Fire-Prone Lands?</i> 	<ul style="list-style-type: none"> Eight new communities accepted into CPAW Second <i>Land Use Planning & Wildfire Forum</i> hosted Local trainings and workshops hosted in selected communities Created visual diagrams and outreach materials to help explain technical wildfire-related issues to developers and the public Two research products released: <i>Planning Tools to Reduce Montana's Wildfire Risk</i>, <i>Assessing Wildfire and Populations at Risk in Santa Fe, NM</i> 	<ul style="list-style-type: none"> Eight new communities accepted into CPAW Implementation support provided to all prior-year communities Third <i>Land Use Planning & Wildfire Forum</i> held Regional capacity-building workshops held in Colorado, Montana, and Oregon Three research products released: <i>Communities Threatened By Wildfires, 2000 – 2017</i>; <i>Full Community Costs of Wildfire</i>; <i>New Montana Homes Increase Wildfire Risk</i>

FORTHCOMING

In 2019, the CPAW program will:

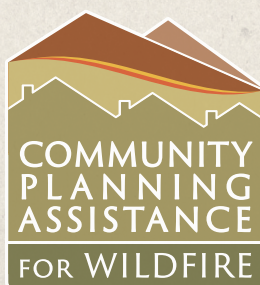
- accept at least four new communities into the program
- provide risk assessments in partnership with U.S. Forest Service Rocky Mountain Research Station to two communities
- continue implementation support for all prior-year communities
- host local capacity-building workshops in each new community
- release new research products and online data visualization tools to support community wildfire planning
- present at professional conferences, events, webinars, and other media and outreach opportunities

Learn more at www.planningforwildfire.org.

Missoula County, Montana adopted a new Community Wildfire Protection Plan provided through the CPAW program. The CWPP was adopted after a year-long process



of stakeholder outreach and public engagement and includes a risk assessment. The CWPP is focused on applying land use planning tools to reduce risk, prioritize fuel treatments, and improve wildfire response.



CPAW is a program of Headwaters Economics in partnership with Wildfire Planning International and the U.S. Forest Service Rocky Mountain Research Station. CPAW is funded by grants from the U.S. Forest Service and private foundations, and is an equal opportunity employer.

Ray Rasker, Ph.D., Executive Director, Headwaters Economics • ray@headwaterseconomics.org • 406-570-7044

Helping communities better plan the wildland-urban interface | www.planningforwildfire.org