

Land Use Planning & Wildfire Forum

Presentations

Creating fire-adapted communities through better land use planning in the
wildland-urban interface

January 24-25, 2018 | St. Julien Hotel, Boulder, CO



Research

*What are the Full Community
Costs of a Wildfire?*

What are the Full Community Costs of a Wildfire?

Park County, MT

Steve Caldwell

County Commissioner

Park County, MT

Mike Inman

Land Use Planning Director

Park County, MT

Today

- **Wildfire Risk in Park County & Request for Research**
- **Identifying Wildfire Costs**
- **Who Pays for these Costs & What does this Mean?**

Today

- **Wildfire Risk in Park County & Request for Research**
- Identifying Wildfire Costs
- Who Pays for these Costs & What does this Mean?

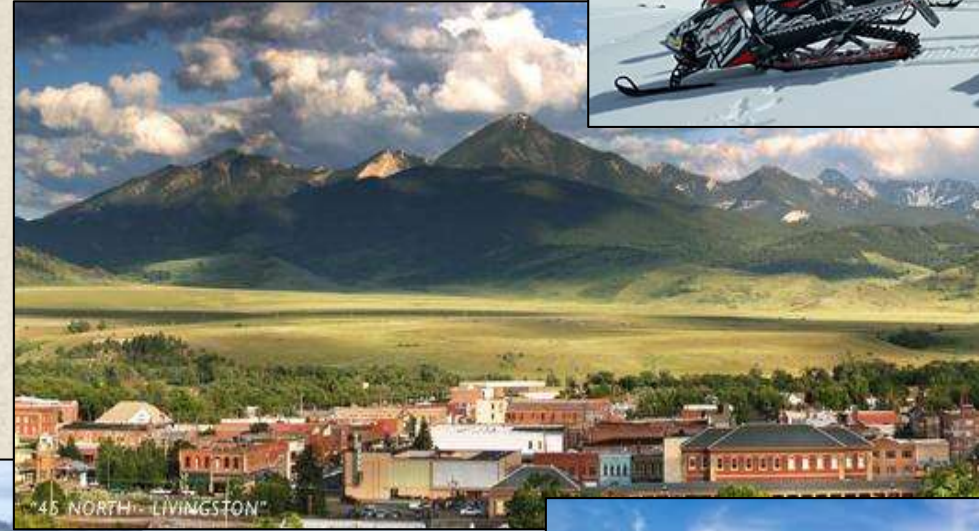
Geographic Overview

- Adjacent to Yellowstone National Park
- High scenic amenities and recreational opportunities
- Vast public lands (53% of landownership)



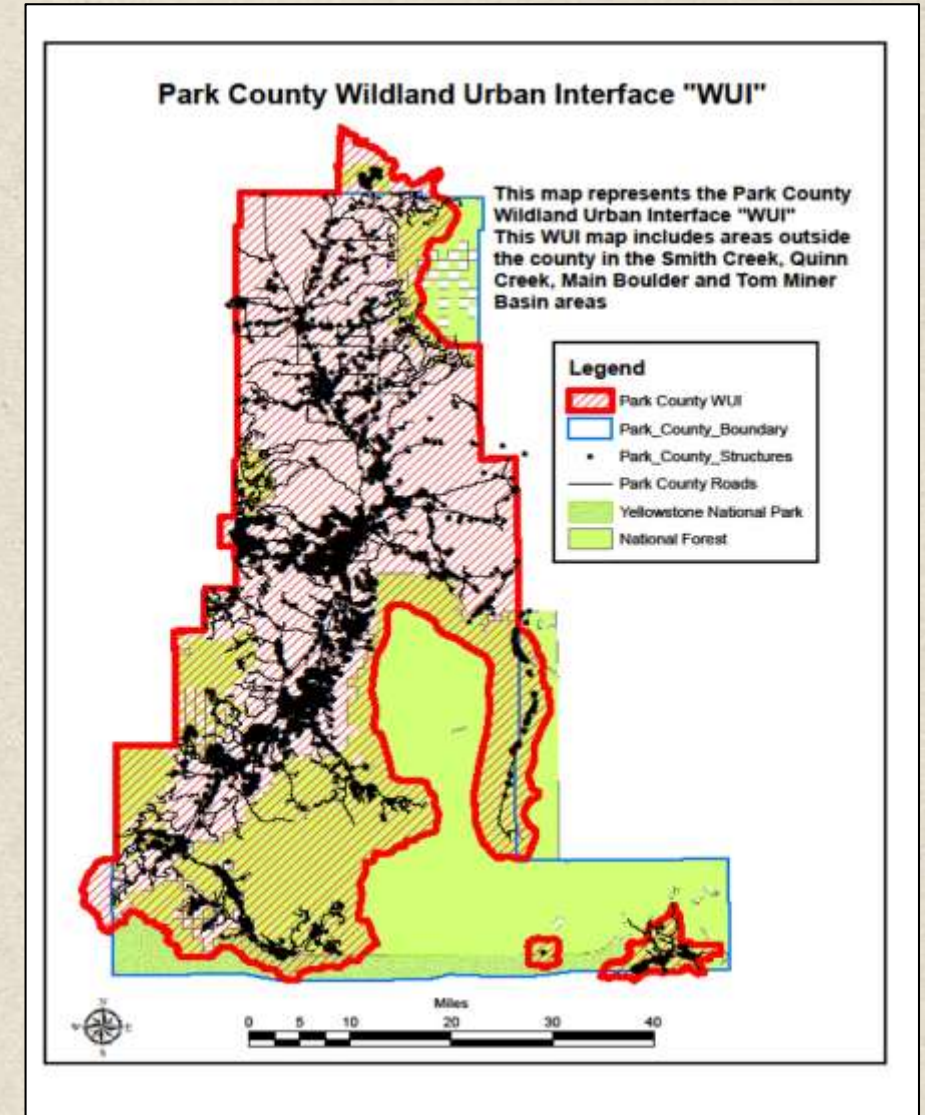
Socioeconomic Context

- Diversified economy driven by service-related industries (lodging, food, real estate, etc.)
- Non-labor income (ex: retirement & investments) has increased 357% since 1970



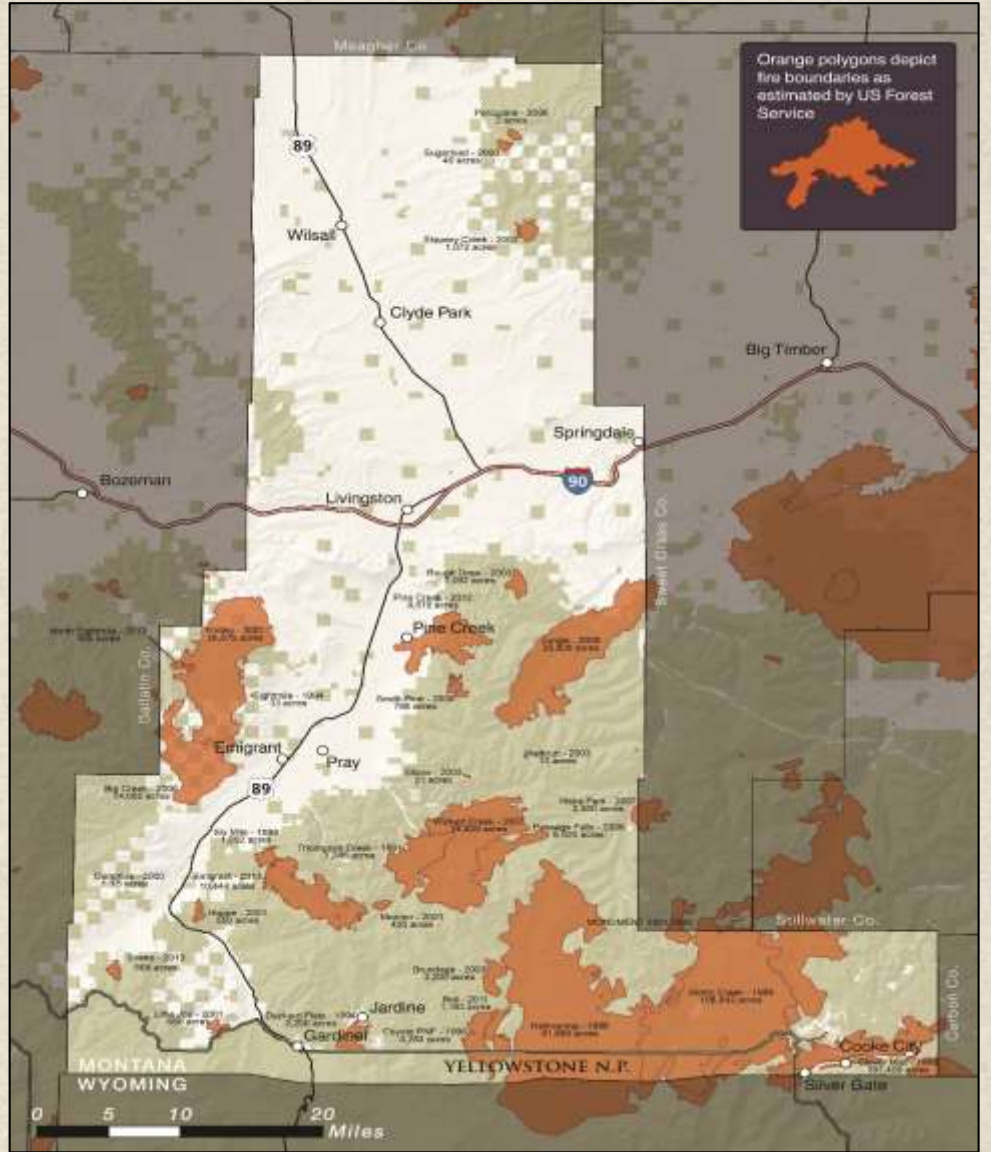
Recent Trends

- 56% of homes in the WUI are second homes (national average is 15%)
- 97% of the WUI is undeveloped, suggesting areas of future growth



Wildfire Risk

- 1988 Yellowstone Fires
- 2006-07 Fires
- Limited Emergency Services



How to Address this Risk

- Fire Adaptive Communities
- Land Use Planning Tools
- Local/State Coordination

Need for data and science to inform dialogue on wildfire risk...



- What are the full community costs of wildfire?
- Who pays for these costs?



Today

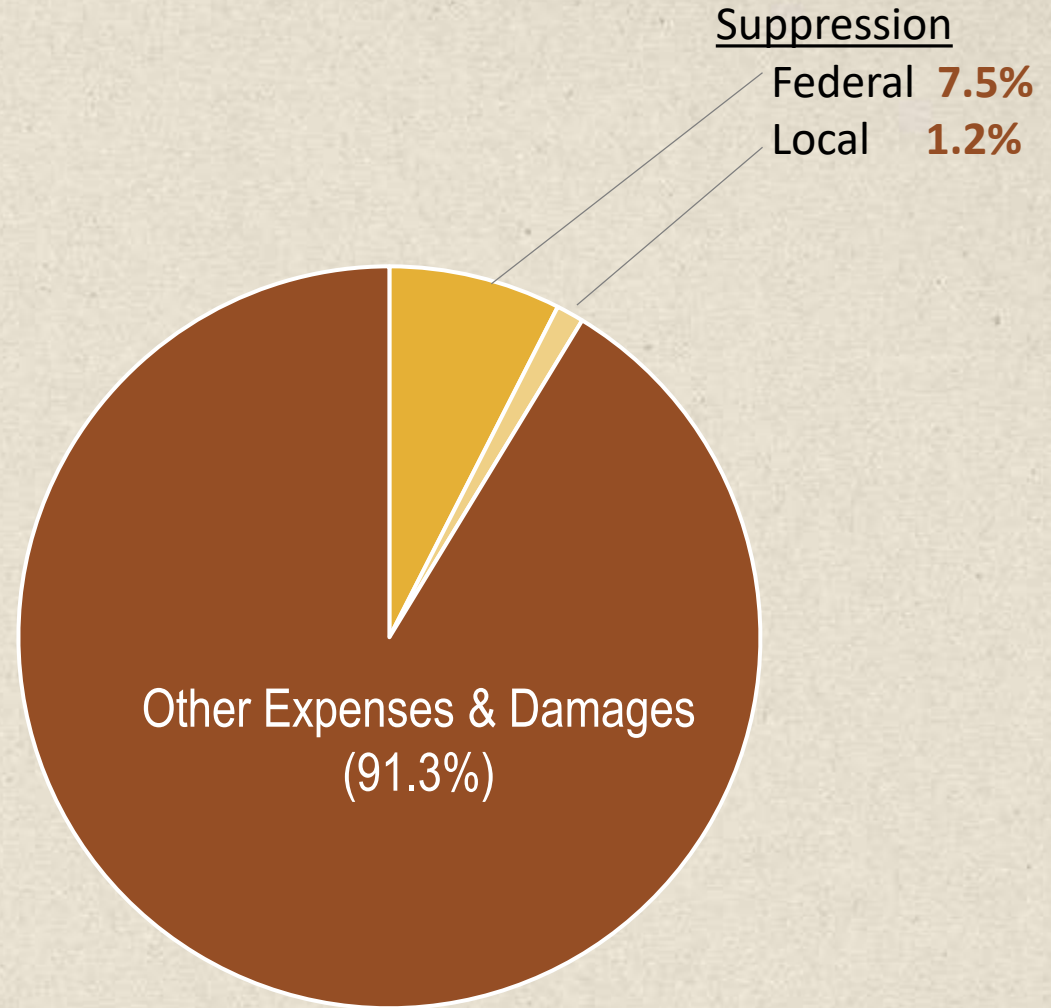
- Wildfire Risk in Park County & Request for Research
- **Identifying Wildfire Costs**
- Who Pays for these Costs & What does this Mean?

Often, suppression activities are the only **costs reported on...**

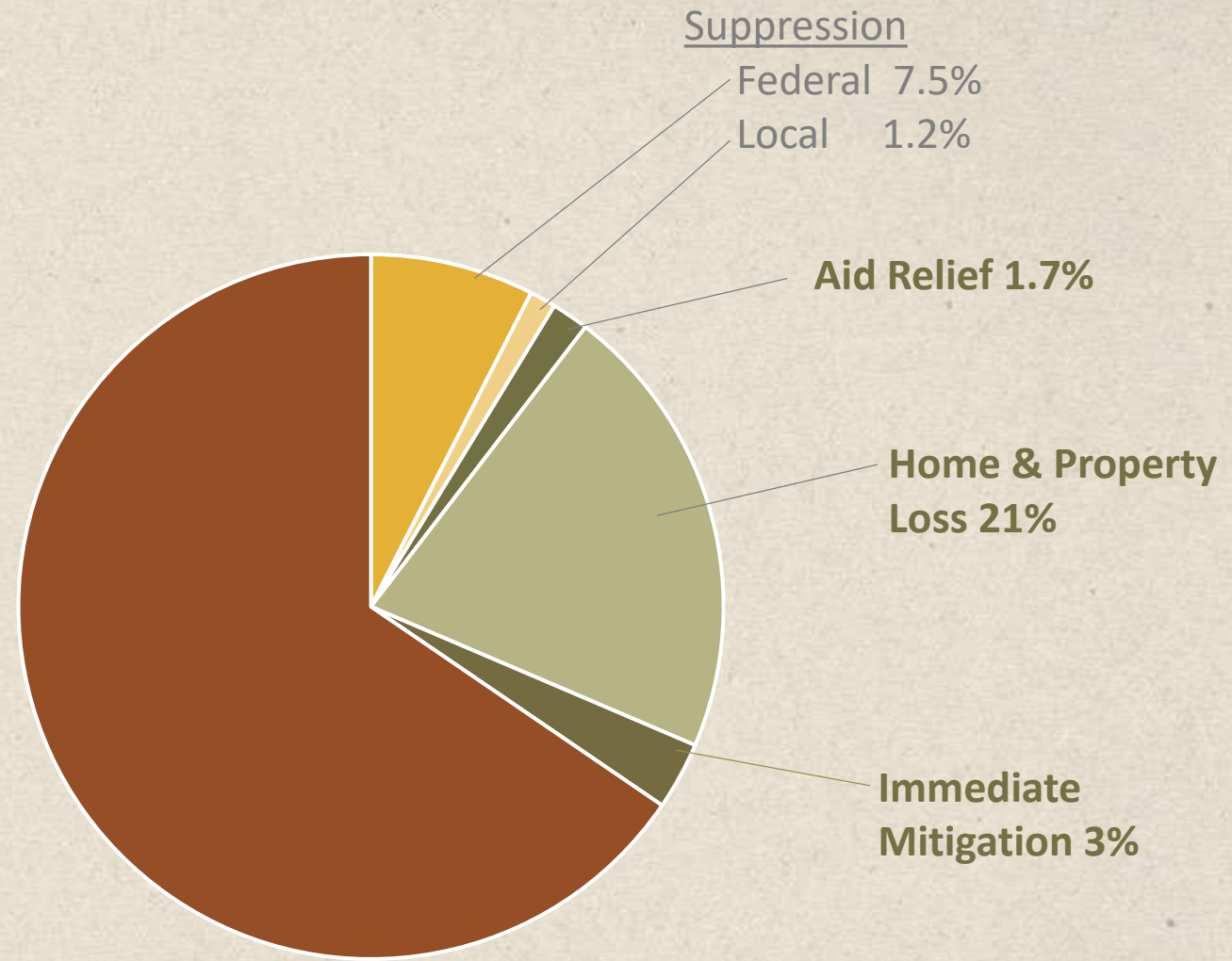
but that's not the full story.

Fire	# of Acres Burned	Total Cost
Hayman Fire (2002)	137,759	\$230 million
Grand Prix Fires (2003)	125,000	\$1.28 billion
Schultz Fire (2010)	15,000	\$139 million
Rim Fire (2013)	257,314	\$1.3 billion
Loma Fire (2016)	4,474	\$34.5 million

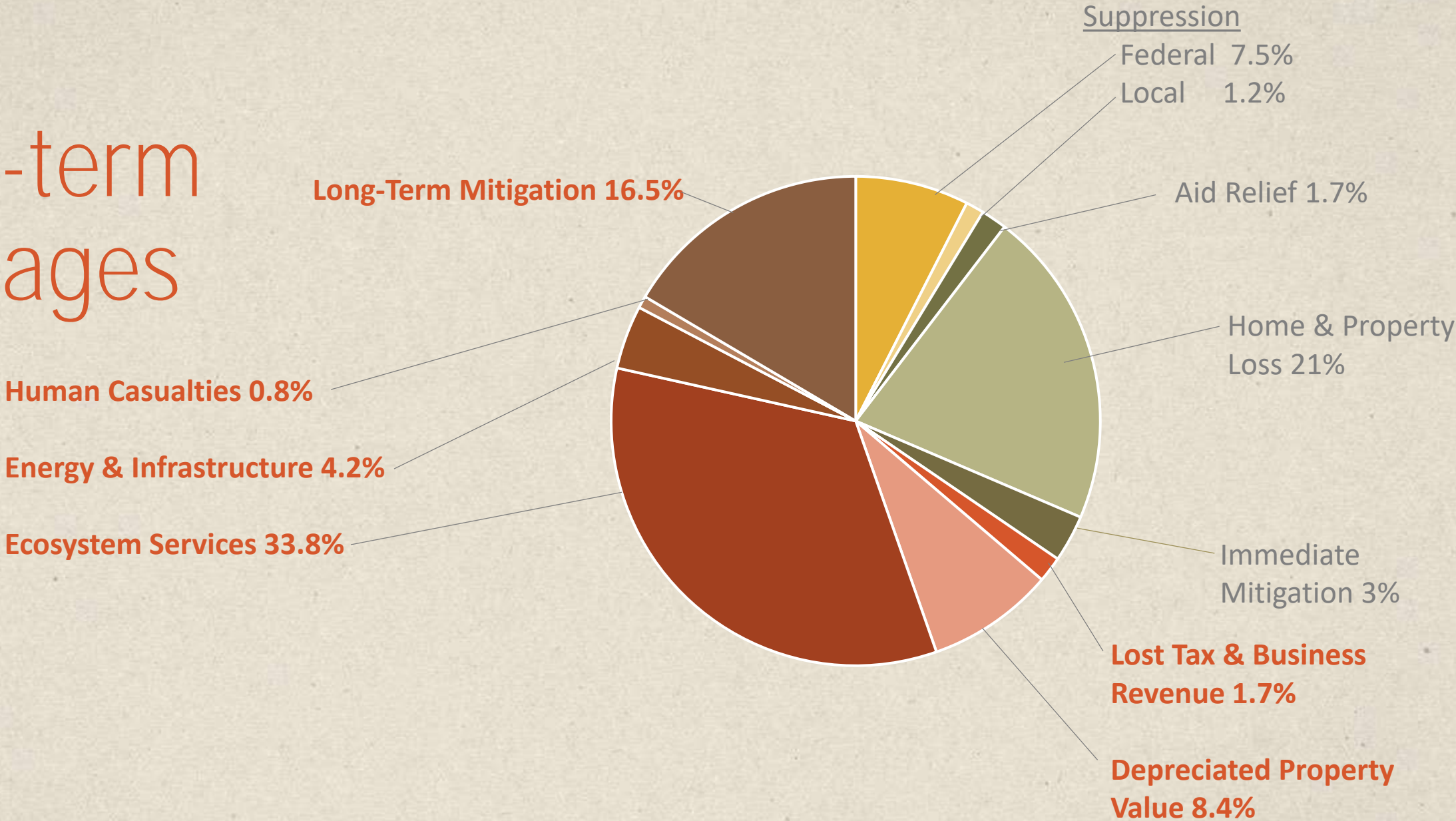
Suppression costs
comprise less than
10% of overall
wildfire budget



The other 90%
involve short-
term expenses



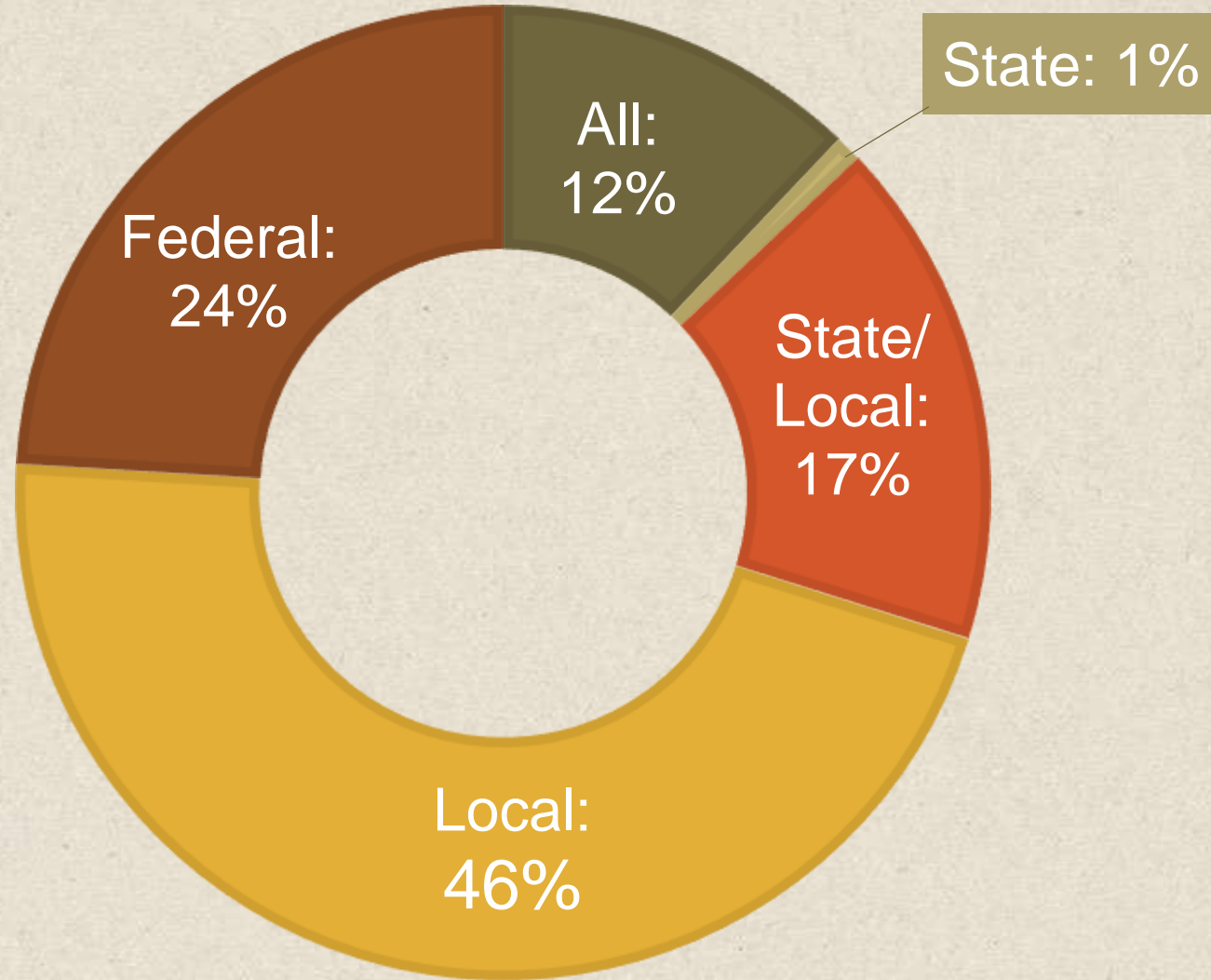
and long-term damages



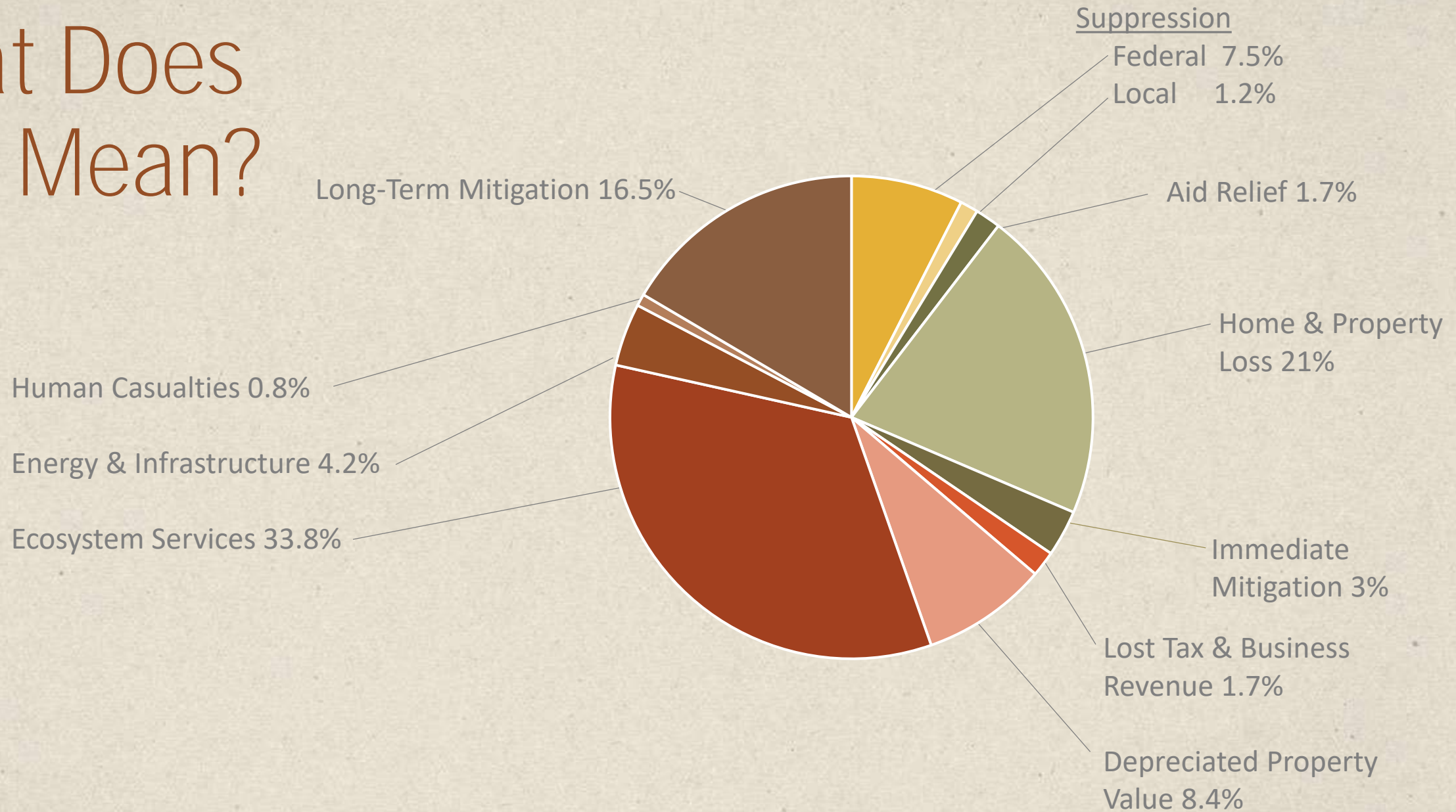
Today

- Wildfire Risk in Park County & Request for Research
- Identifying Wildfire Costs
- **Who Pays for these Costs & What does this Mean?**

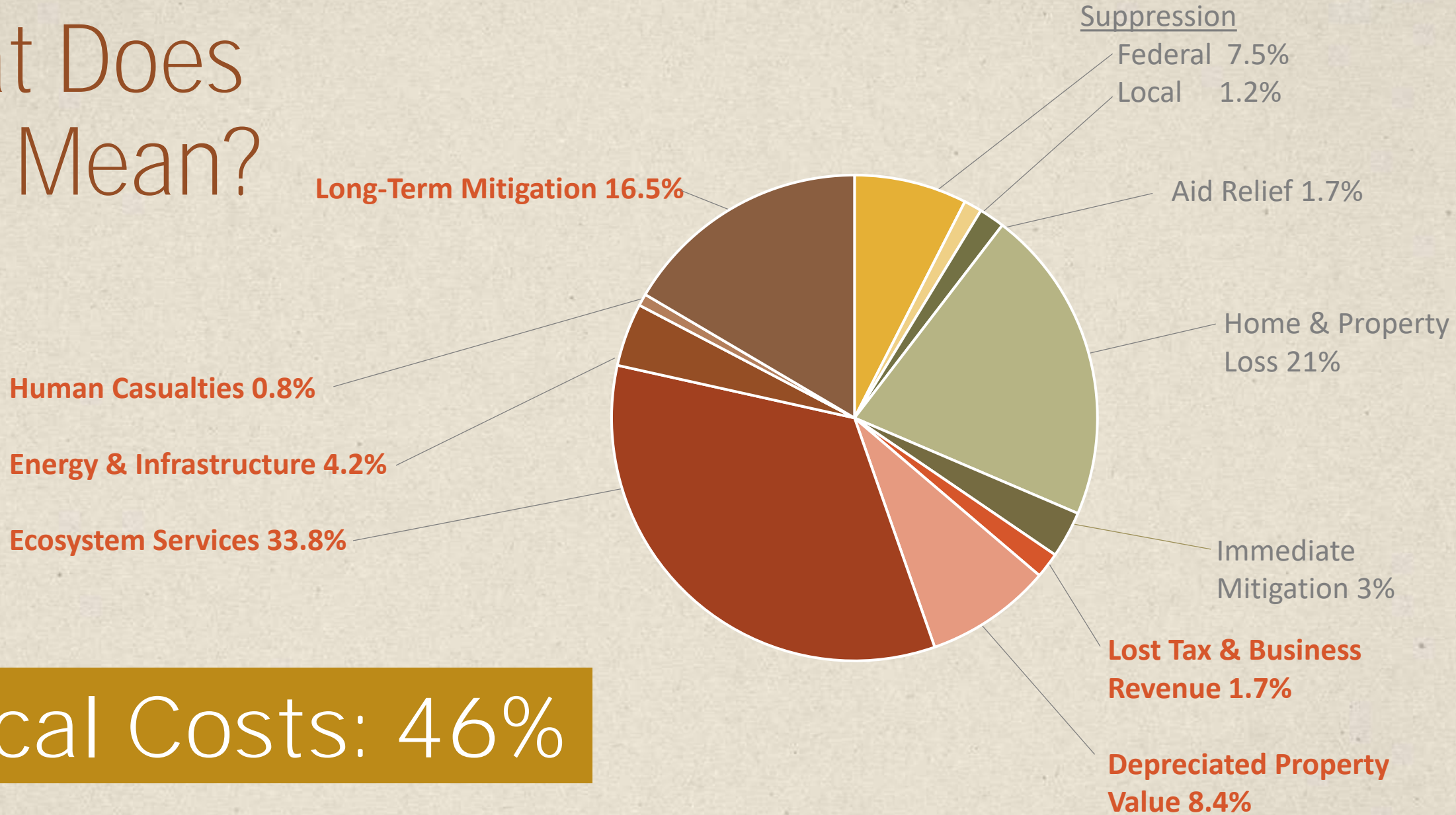
Who Pays?



What Does This Mean?



What Does This Mean?



Local Costs: 46%

What Does This Mean for Me?

- **Strained government services** (road maintenance, local staffing/capacity, etc.).



What Does This Mean for Me?

- **Strained government services** (road maintenance, local staffing/capacity, etc.).
- Pressure on recreational facilities and state/federal lands due to **“fire borrowing”**.



What Does This Mean for Me?

- **Strained government services** (road maintenance, local staffing/capacity, etc.).
- Pressure on recreational facilities and state/federal lands due to “**fire borrowing**”.
- **Increased insurance premiums** if home is situated in high-risk area.



What Does This Mean for Me?

- **Strained government services** (road maintenance, local staffing/capacity, etc.).
- Pressure on recreational facilities and state/federal lands due to “**fire borrowing**”.
- **Increased insurance premiums** if home is situated in high-risk area.
- **Depressed local economies** impacted the social and economic health of the community.



Contact



Steve Caldwell

scaldwell@parkcounty.org

406-222-4118

Mike Inman

wminman@parkcounty.org

406-222-4102