

Land Use Planning & Wildfire Forum

Presentations

Creating fire-adapted communities through better land use planning in the
wildland-urban interface

January 24-25, 2018 | St. Julien Hotel, Boulder, CO



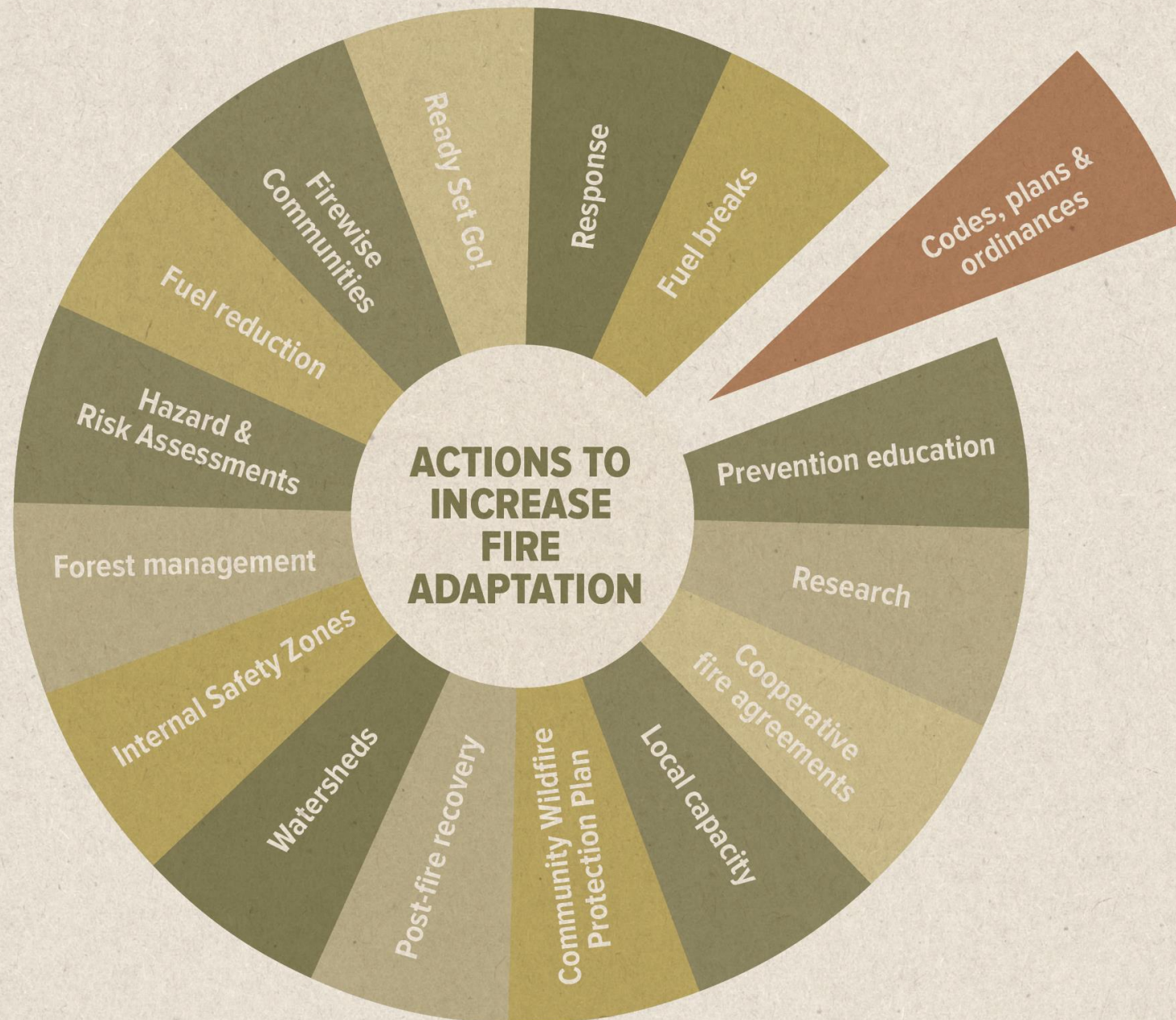
CPAW Overview

Program Highlights, Insights, and Looking Ahead

Molly Mowery, AICP

Wildfire Planning International

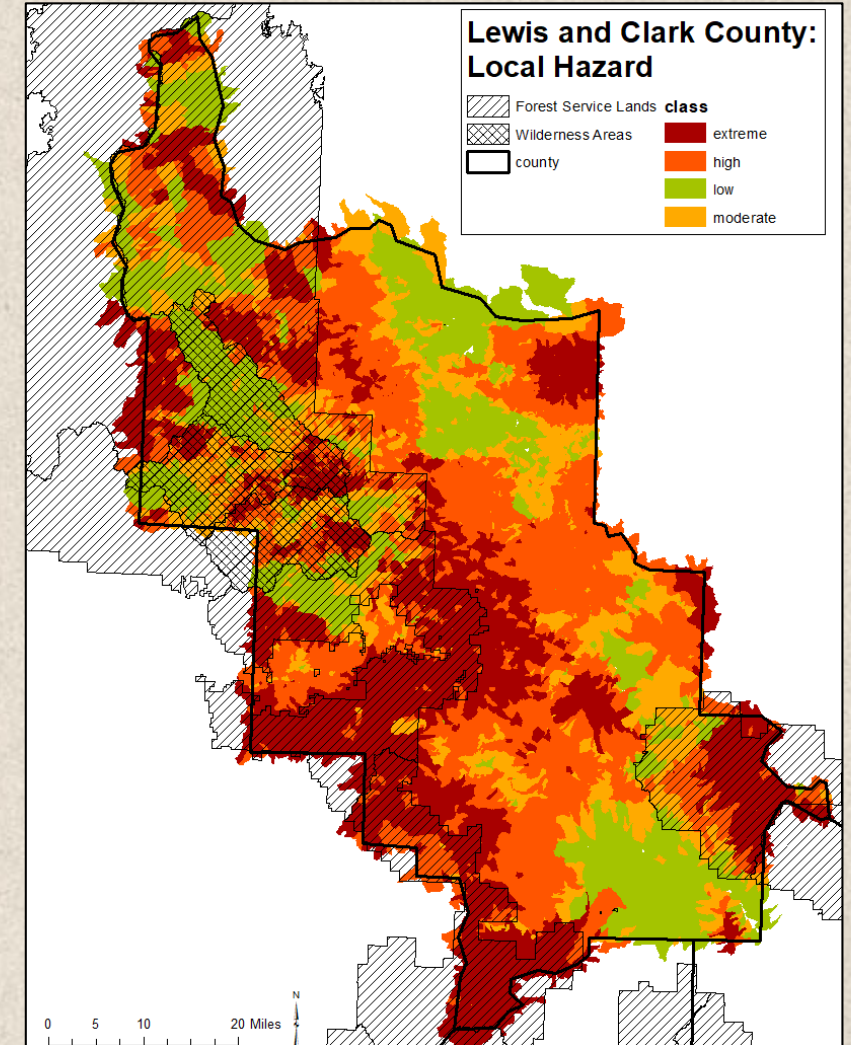




Highlights: Stakeholder Connections



Highlights: RMRS Partnership



Highlights: Creative Solutions

- WUI assessment workarounds
- Unique partnerships and funding
- WUI Code “swiss cheese”



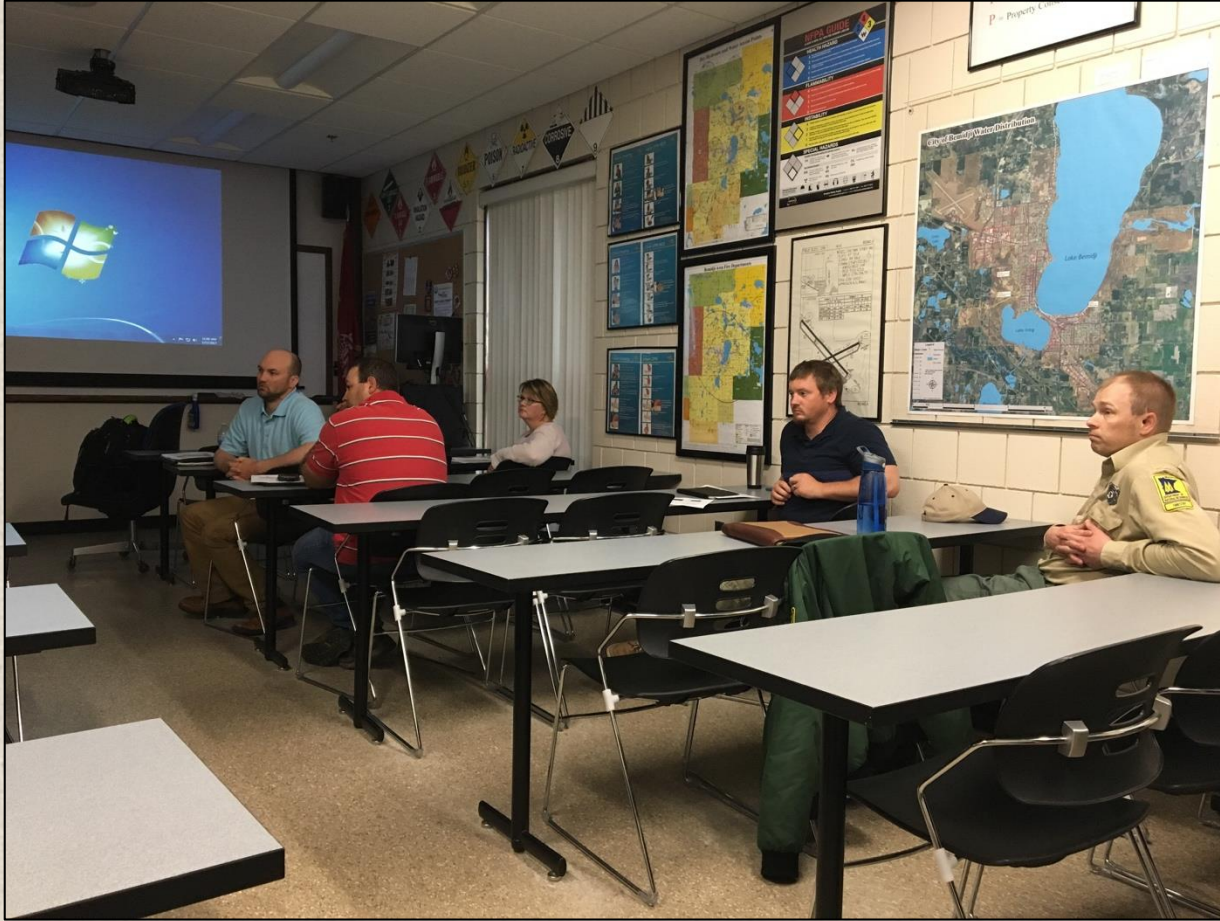
Recommendations for Huerfano County, CO



Prepared by:
Wildfire Planning International, LLC
Wildland Professional Solutions, Inc
DGC Consulting

October 2017

Highlights: Trainings



Highlights: Community Successes

- Comprehensive Plan updates
- WUI Code adoption
- CWPP & Hazard Plan updates

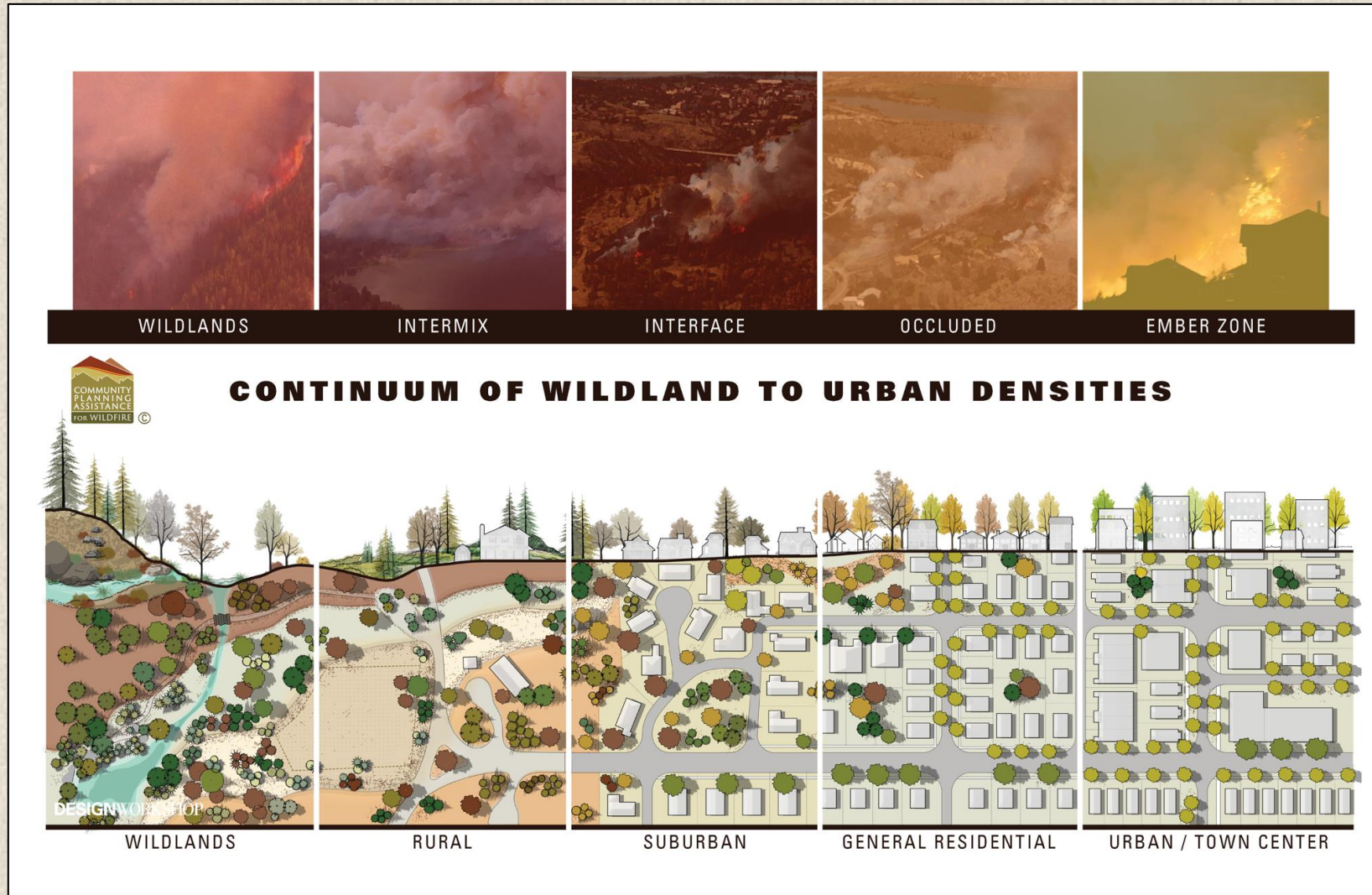


Implementation Insights

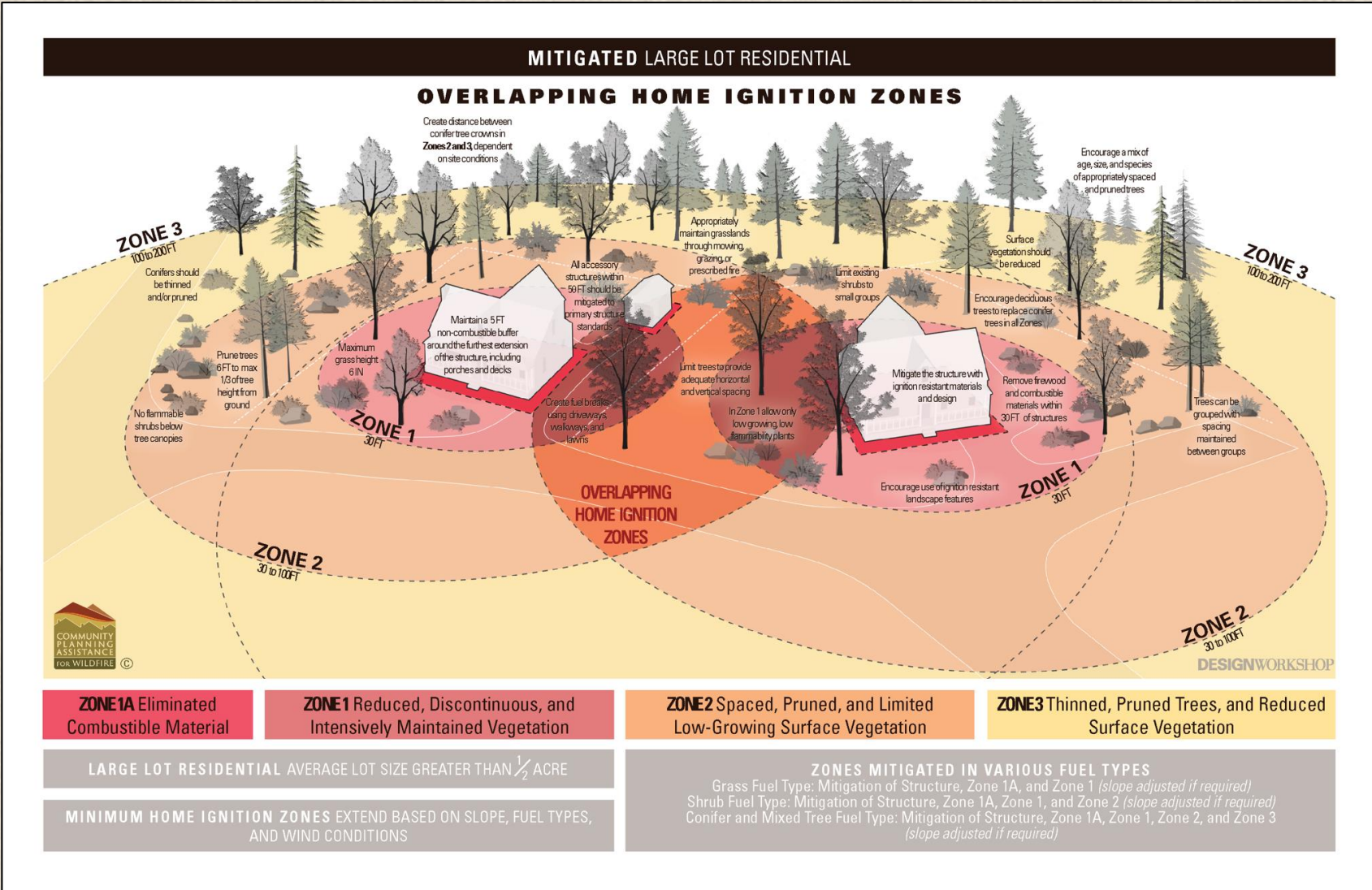
- Long-term commitment
- Local buy-in and support
- Data needs
- State-level code restrictions



Looking Ahead: New WUI Visuals



Looking Ahead: New WUI Visuals



Looking Ahead: Tracking & Support



Helping Communities
Better Plan the
Wildland-Urban Interface

Wildland Urban Interface (WUI) Code

Based on science and research, a Wildland-Urban Interface (WUI) Code serves as a tool to make a community safer and bridges traditional building, fire, and landscaping standards. Adopting a code that specifically addresses wildfire aligns with Washington State guidelines and follows other western U.S. communities that face similar wildfire hazard.

What is a WUI Code?

- A WUI Code is adopted locally and can be customized to address differing wildfire risk within a community. For example, different mapped WUI areas within a community may have different levels of hazard, and thus different requirements.
- WUI Codes are customized for individual community needs, but typically address a combination of factors that reduce wildfire hazard, such as vegetation management, road design, water supply, construction materials, and site plan conditions like setbacks and slopes.

What are the benefits of a WUI Code?

- A WUI Code ensures future development is built to a consistent standard and provides a measurable way to address wildfire risk.
- The standards for new construction make structures more likely to withstand wildfire and can reduce long-term spending on fire suppression.
- A WUI Code may help keep insurance coverage available. As more states across the West experience losses from wildfire, some insurance companies have already begun dropping customers or raising rates.



Photo: FEMA/Annam Boudier



Looking Ahead: Leveraging Research

- Economic impact studies
- Hazard assessment methodology



Thank You!

